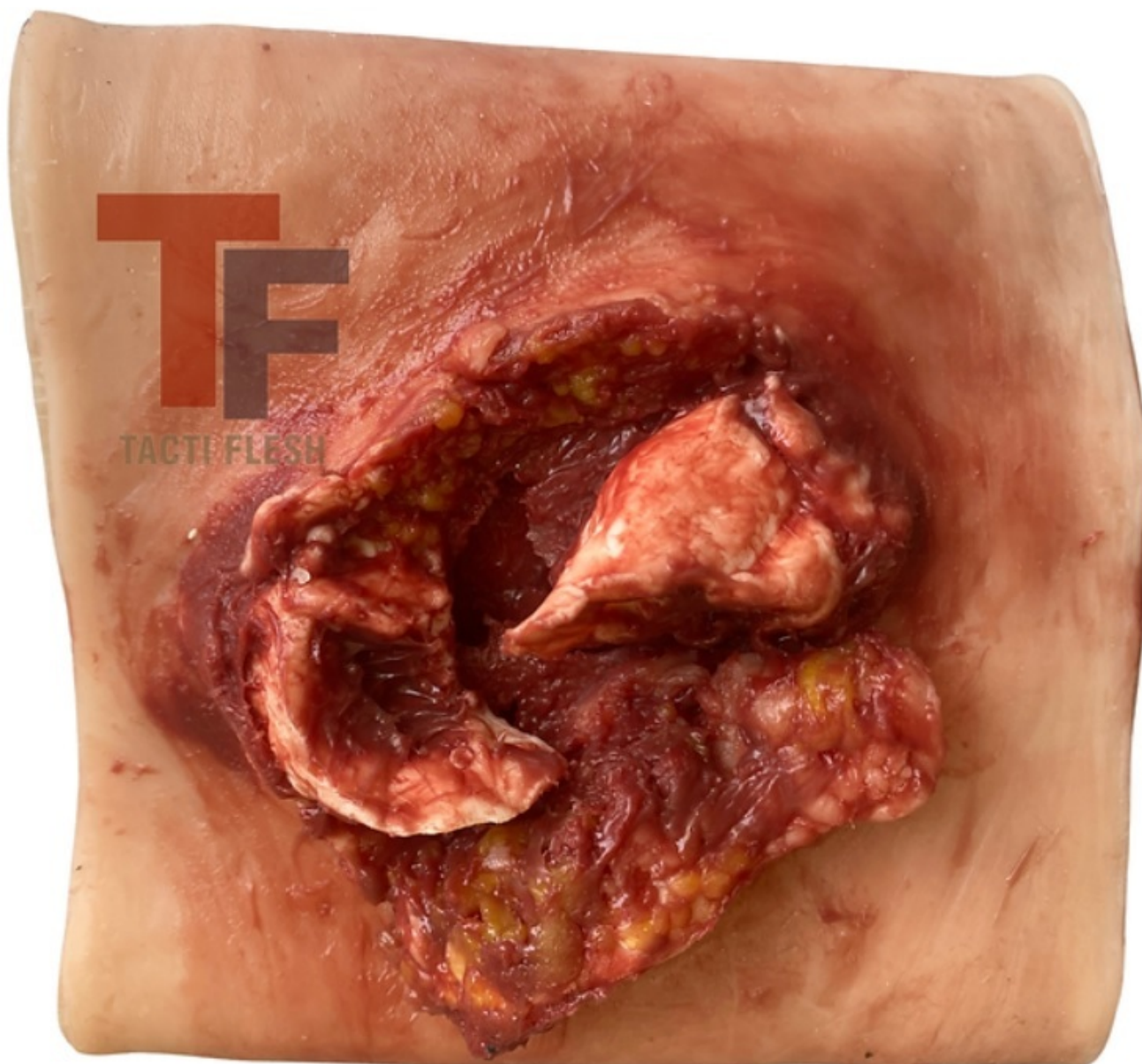


**TFAW06 - Attachable Humerus Open  
fracture (Hard bone) simulator with  
bleeding set**

Order code: **4134.TFAW06**



Cena bez DPH

381,00 Eur

Price with VAT

461,01 Eur

Parameters

Quantitative unit

ks

The Humerus Open Fracture Simulator stands as a state-of-the-art simulation device meticulously engineered to replicate open fractures

specific to the humerus bone. This advanced trainer embodies a lifelike representation of open fractures accompanied by bleeding capabilities, effectively simulating a blend of fracture types, including mixed fractures and avulsions. Its core mission revolves around imparting students with the expertise to adeptly manage and treat intricate open fracture injuries of the humerus.

Designed with practicality in mind, the Humerus Open Fracture Trainer's wearable form permits direct engagement with the simulated open fracture site on the humerus. This tactile and immersive learning experience serves as a cornerstone for skill acquisition.

Our new system of attachment will help the users to adjust the simulator tight and comfortably on the body.

Beyond its emulation of open fractures, the Humerus Open Fracture Trainer excels in its ability to simulate bleeding, thus enhancing the authenticity of the training. This dynamic feature enables students to practice managing open fractures accompanied by bleeding, effectively replicating real-life scenarios.

In summary, the Humerus Open Fracture Trainer emerges as an unparalleled training instrument that seamlessly amalgamates realism and user-friendliness. With its adaptable design tailored to the humerus bone, inclusive of attachment alternatives, and the incorporation of lifelike open fractures with bleeding capabilities, this trainer delivers a comprehensive and unparalleled learning experience for individuals seeking to elevate their mastery in managing open fracture injuries of the humerus, spanning various fracture types including mixed fractures and avulsions.

Set Contents: Wearable wound Squeeze bottle, Silicone tube, plastic connector and a plastic clamp

Size: L 28cm X H 0,3cm X W13,5cm(skin) (fractures bones and avulsion are elevated from skin)

Weight: 275 grams