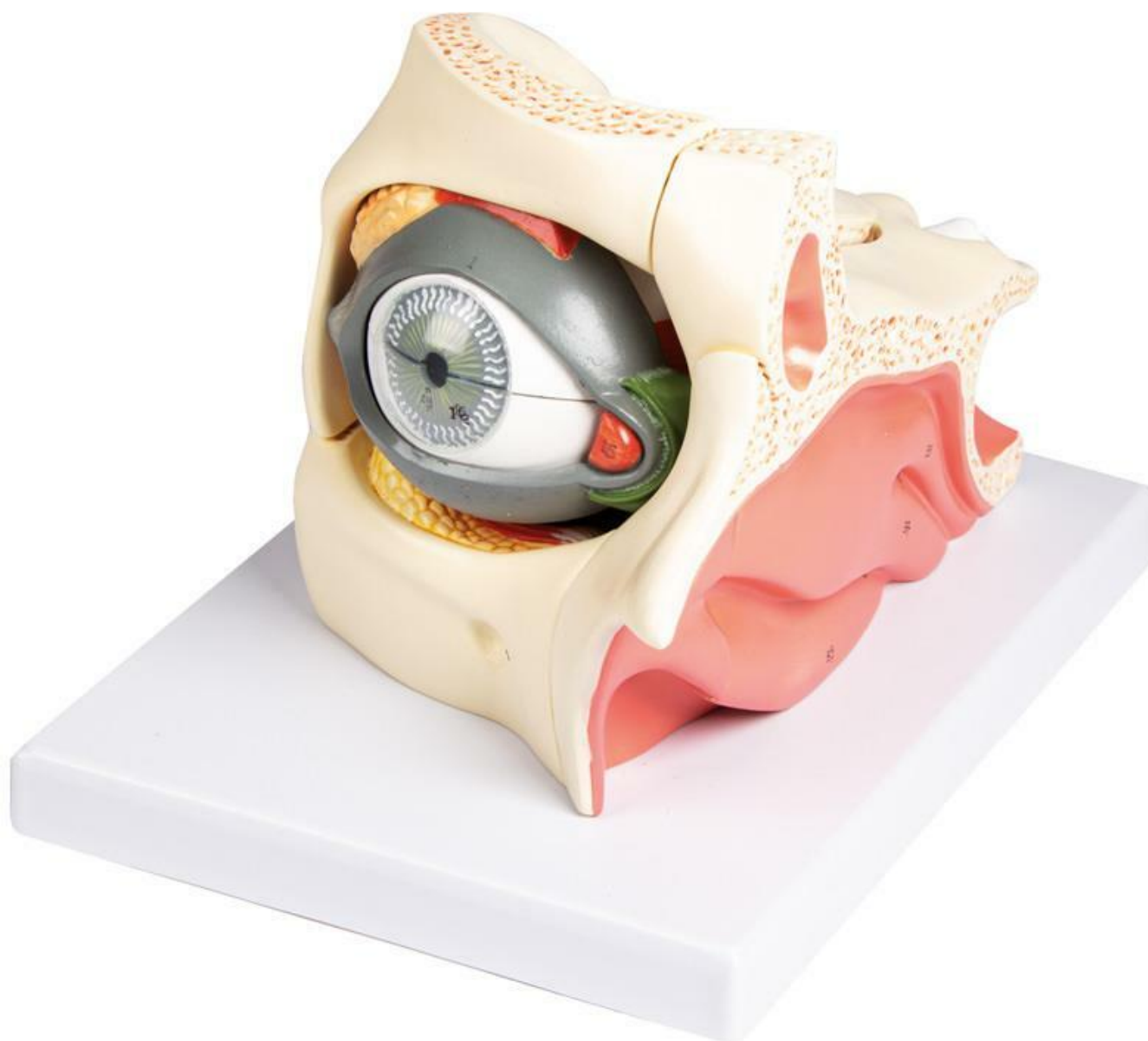


F160 - Eye in orbit with eyelid
Order code: **4003.F160**



Cena bez DPH

346,00 Eur

Price with VAT

418,66 Eur

Parameters

Quantitative unit

ks

This **13-part model**, magnified approximately **2.5 times**, shows the anatomy of the human eye.

The eye socket can be divided into three parts and then shows the following internal structures:

- Eyelid with lacrimal gland and nasolacrimal duct
- Muscles (4 parts)
- Eyeball, can be divided into two parts
- Cornea, iris, lens and vitreous body (3 parts)

On base plate.

Size: 25 x 18 x 18.5 cm, weight: 2.2 kg