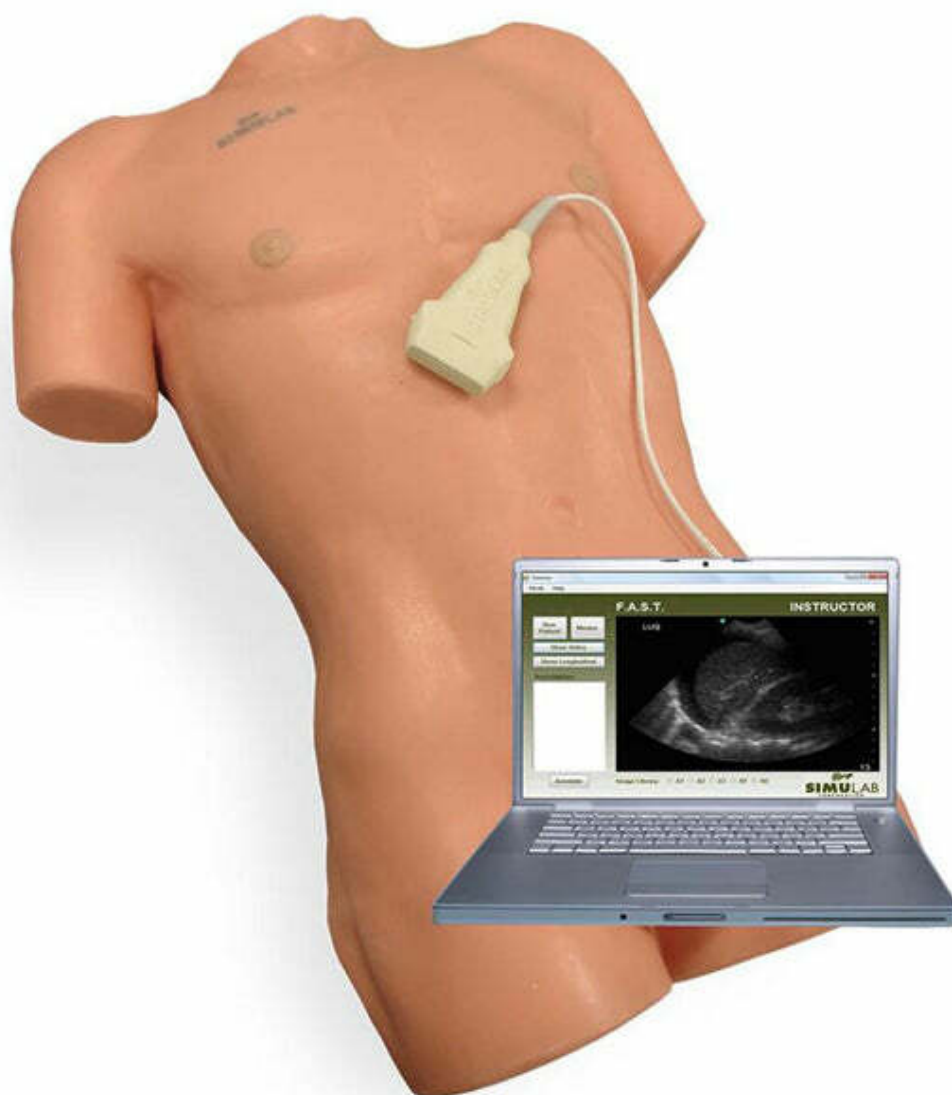




HELAGO-CZ, s.r.o.
Commercial Register maintained by the Regional
Court in Hradec Králové
Section C, File 17879
Kladská 1082
500 03 Hradec Králové 3
Company ID: 25 96 39 61, VAT: CZ 25963961
Phone: 495 220 229, 495 220 394
Fax: 495 220 154
GSM gate: 602 123 096
E-mail: info@helago-cz.cz
Web: <http://www.helago-cz.cz>

SNMP-21 - SonoMan Training Package (SNM-21, SNMA-21, SNME-21, SNMEF-21, SNMF-21, SNMG-21, SNMR-21)

Order code: **4129.SNMP21**



Information about product price on demand

Parameters

Phantoms and simulators

Ultrasound phantoms

The SonoMan® Diagnostic Ultrasound Simulator Training Package is an innovative training platform for training proficiency in trauma and emergency/bedside ultrasound to evaluate critically ill patients. This package includes the SonoMan body form and all SonoMan software modules for FAST, eFAST, Gallbladder, Renal, AAA, and Echo.

The training system offers an extensive image and video library with an option of six software modules. Each module provides up to seven clinical cases presenting normal or abnormal findings, allowing the instructors to mimic various pathologies in emergent or critical care settings.

The SonoMan body form includes 258 embedded image locations, and a simulated ultrasound probe and is compatible with six pathology modules. Connect the simulated ultrasound probe to a PC. As the probe scans the body form, the computer monitor will simulate an ultrasound machine, displaying images and video from a patient for assessment.

Within the software modules, instructors can pre-program pathologies allowing users to assess, locate, and then diagnose the patient while visualizing the complete thoracic and abdominal region.

Modules included in the SonoMan System Package:

- FAST Module (SNMF-21)
- Echo Module (SNME-21)
- Gallbladder Module (SNMG-21)
- Renal Module (SNMR-21)
- eFAST Module (SNMEF-21)
- AAA Module (SNMA-21)

Note: PC/Laptop not included.

Includes:

- SonoMan Body Form
- SonoMan Software
- FAST Module (SNMF-21)
- Echo Module (SNME-21)
- Gallbladder Module (SNMG-21)
- Renal Module (SNMR-21)
- eFAST Module (SNMEF-21)
- Transabdominal Ultrasound Probe with Protector
- SonoMan Carrying Case

Features:

- The software simulates an ultrasound machine on any Windows PC
- Body form included embedded targets for each of the clinical viewing windows based on the computer module selected
- Transverse and longitudinal viewing options
- Images and videos are of actual patients - both normal and abnormal
- Each module includes an instructor (enable visual instruction with mentor mode to discuss pathology and diagnoses) and student mode (randomly selects patients to build diagnosis and decision-making skills)
- Mentor mode allows users to activate onscreen guidance identifying the anatomy and pathology of the digital images

Skills:

- Understand and diagnose disease states using patient images, videos, and ultrasound acquisition on the body form
- Identify external landmarks through visualization and palpation of the soft tissue body form