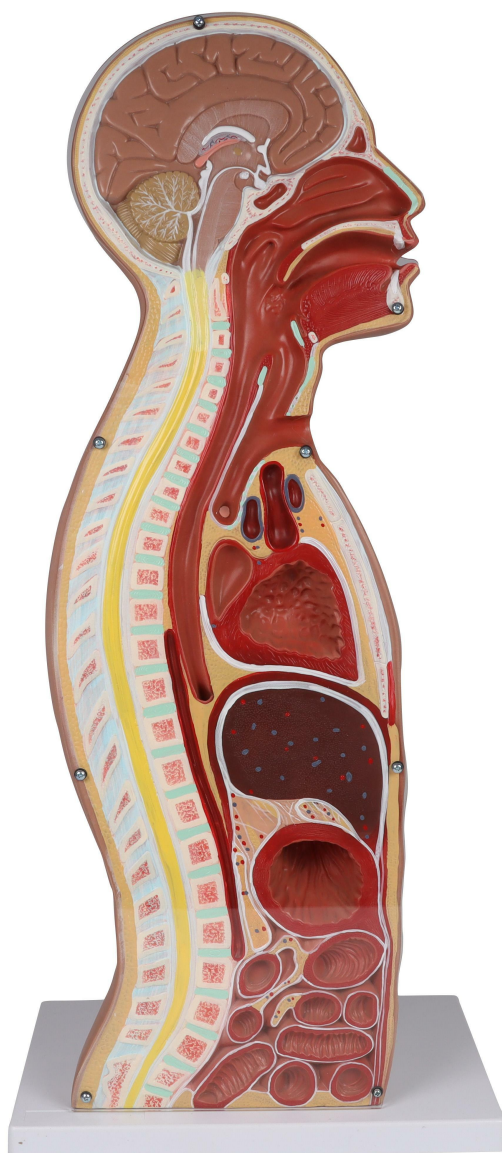


B328 - NG & Tracheostomy Torso
Order code: **4003.B328**



Cena bez DPH

500,00 Eur

Price with VAT

605,00 Eur

Parameters

Quantitative unit

ks

This model shows a cross-section in the sagittal plane. The cross-section runs through the nose, mouth, throat, trachea, esophagus, and stomach. A feeding tube or catheters can be inserted through the nose or mouth into the esophagus and stomach. A tracheostomy is added for the demonstration of endotracheal suctioning.