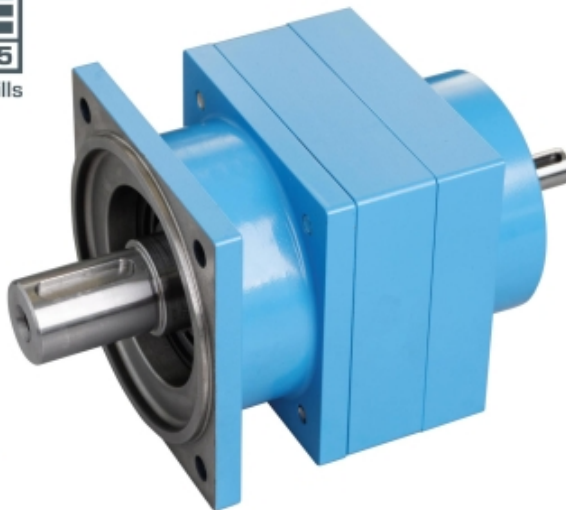


MT 122 Assembly exercise: Planetary gear

Order code: **5201.05112200**



Information about product price on demand

Parameters

Quantitative unit

ks

GUNT MT 122

The assembly kit provides a hands-on approach to learning about planetary gear assembly.

The kit includes a sun gear, three planet gears, a fixed ring gear, and other necessary components, allowing users to build a functional planetary gearbox and understand its design and operation.

Multimedia instructional materials, including [PDFs](#), [CAD files](#), [STEP files](#), and videos, support the learning process.

Online access to the GUNT Media Center provides additional resources and technical support.

Technical Data:

- **Gearbox dimensions without shaft connections:** 140x115x115 mm
- **Transmission ratio:**
 - **Sun gear:**
 - Number of teeth: 24
 - Module: 1 mm
 - **Planet gears:**
 - Number: 3
 - Number of teeth: 36
 - Module: 1 mm
 - **Ring gear:**
 - Number of teeth: 96
 - Module: 1 mm
 - **Transmission ratio:** 5:1
- **Nominal output torque:** 160 Nm at 3000 rpm
- **Shaft connections:**
 - **Drive:** Ø14x34 mm
 - **Output:** Ø30x45 mm

Dimensions and Weight:

- **Storage system:** 600x400x590 mm
- **Weight:** approximately 25 kg

Required for Operation:

For optimal use of the kit, access to a computer or the internet is recommended to utilize online materials and support.