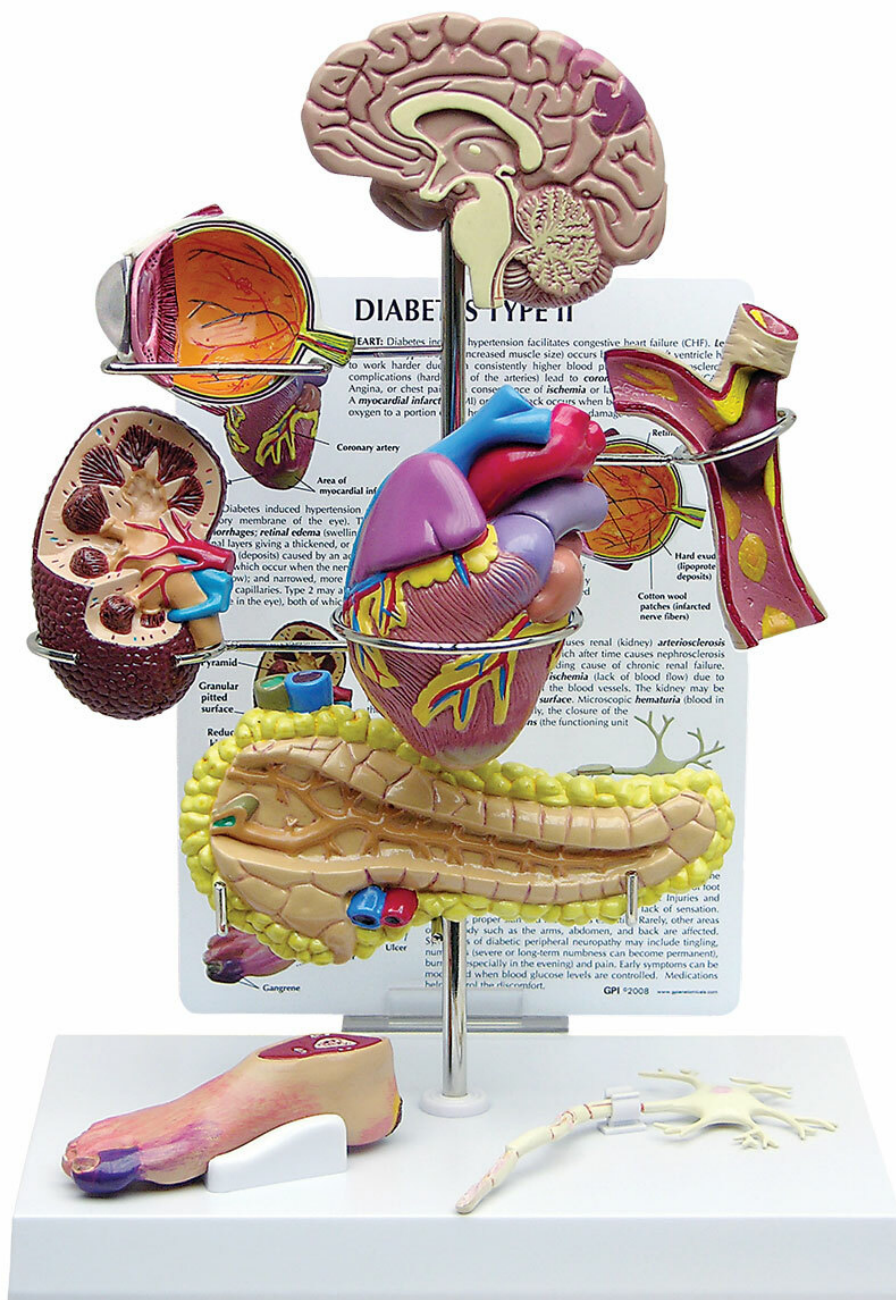


**W33386 - Type II Diabetes Set**  
 Order code: **4004.1019573**



Cena bez DPH  
 Price with VAT

216,00 Eur  
 261,36 Eur

Parameters  
 Quantitative unit

ks

The Type II Diabetes Set includes miniature brain, eye, heart, kidney, artery, pancreas, neuron, and foot models. Education card illustrates effects associated with Type II Diabetes: stroke, ocular pathology, hypertensive heart disease, hardening of the kidney, hardening of the arteries, insulin resistance, neuropathy, and foot ulcerations. Model display stands 10" tall. Models are reduced size.