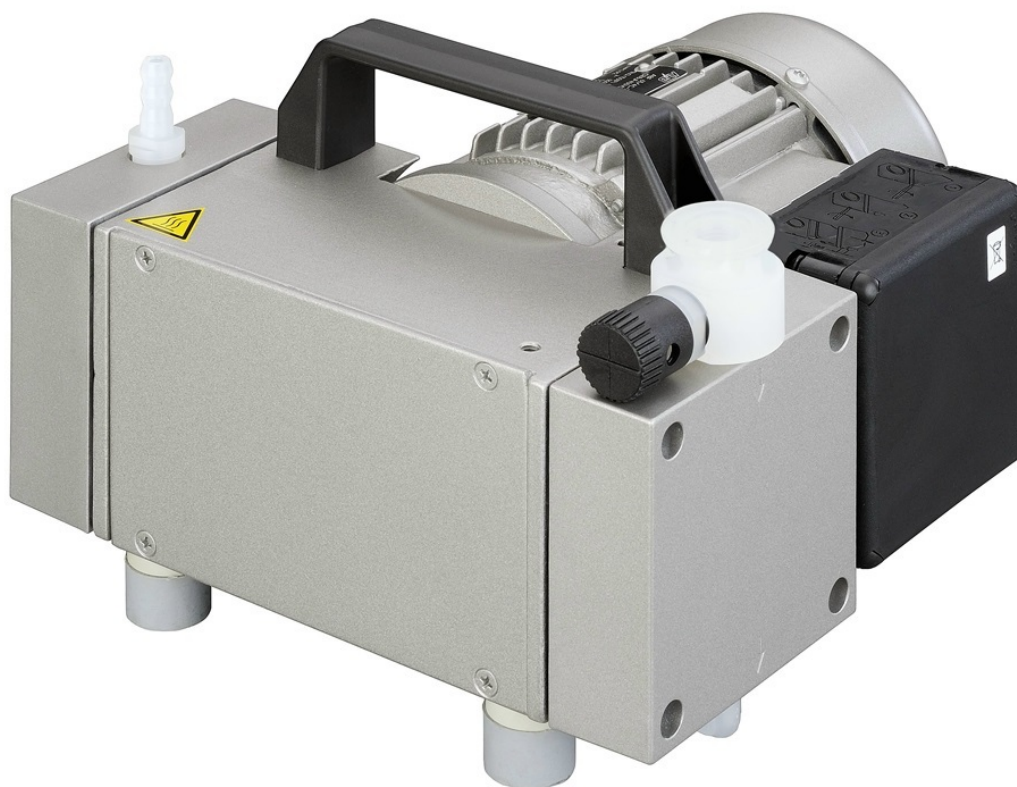




HELAGO-CZ, s.r.o.  
Commercial Register maintained by the Regional Court in  
Hradec Králové  
Section C, File 17879  
Kladská 1082  
500 03 Hradec Králové 3  
Company ID: 25 96 39 61, VAT: CZ 25963961  
Phone: 495 220 229, 495 220 394  
Fax: 495 220 154  
GSM gate: 602 123 096  
E-mail: info@helago-cz.cz  
Web: http://www.helago-cz.cz

## 412722 - Diaphragm pump MPC 301 Z - for chemical applications

Order code: **8010.412722**



Cena bez DPH

1.701,00 Eur

Price with VAT

2.058,21 Eur

Parameters

Pumping rate [l/min]

38,3

Threshold pressure [kPa]

<0,8

Vacuum pump

Diaphragm

Quantitative unit

ks

Diaphragm pumps for chemical applications - type MPC - are chemically compatible and resistant to aggressive solvents and acid vapors which are common in laboratories. The diaphragm are made out of elastomer with PTFE layer. The pump and connection heads are carbon fiber reinforced. Their electrical conductivity prevents electrostatic charging and minimizes the risk of gas mixture igniting inside of the pump.

The diaphragm pump MPC 301 Z is a two-stage pump. It is compact and functional. Maintenance and service are quick and easy to carry out. The pump operates extremely quietly.

The diaphragm pump MPC 301 Z is designed for:

- Conveying and compressing neutral and aggressive gases and vapors
- Generation of vacuum up to an ultimate pressure
- Use in physical and chemical laboratories in combination with gel dryers, vacuum ovens and rotary evaporators.

#### **Scope of delivery:**

- 2-head chemical diaphragm pump
- integrated motor protection switch
- hose nozzle DN 8 for hose inner diameter 8 mm
- vibration isolating feet
- external power supply and device connection cable IEC with plug CEE, UK

#### **Technical Data**

- Number of heads / stages: 2/2
- Max. pumping speed at 50 Hz in m<sup>3</sup>/h (l/min): 2.3 (38.3)
- Max pumping speed at 60 Hz in m<sup>3</sup>/h (l/min): 2.5 (41.7)
- Max. pumping speed at 60 Hz in cfm (l/min): 1.4 (41.7)
- Ultimate pressure in mbar (Torr): < 8
- Wired for: 230V, 50/60Hz
- Intake connection: DN 16 KF with optional Hose nozzle DN 8
- Exhaust connection: Hose nozzle DN 8
- Sound level (dB): < 44
- Dimensions (W/D/H) in mm: 230/265/170
- Weight kg (lbs): 11.2 (24.7)