



HELAGO-CZ, s.r.o.
Commercial Register maintained by the Regional Court in Hradec Králové
Section C, File 17879
Kladská 1082
500 03 Hradec Králové 3
Company ID: 25 96 39 61, VAT: CZ 25963961
Phone: 495 220 229, 495 220 394
Fax: 495 220 154
GSM gate: 602 123 096
E-mail: info@helago-cz.cz
Web: http://www.helago-cz.cz

CPR Evaluation Simulator

Order code: **4119.BTCPEA**



Information about product price on demand

Parameters

Construction

Quantitative unit

Adult manikin

ks

High-tech design

- Human rib style spring system.

New Automatic functions

- Pupillary reflex (3 cases)
- Pulse beating (Carotid pulse)
- Spontaneous breathing (Breath sound and Chest movement)

Blue-tooth communication

- Evaluation is easier by applying wireless communication between the simulator and laptop computer
- Simultaneous evaluation is possible by connecting multiple simulators to 1 laptop computer

Over compression depth (7cm)

- Over compression can be detected by measuring extra 1cm from AHA guideline.

Defibrillator/ AED Shock

- It is possible to give real AED shock to the manikin.
- When user attach the defibrillator pads, cardiac rhythm such as VF, VT, Asystole, NSR will be displayed

Verification in real-time

- Chest compressing, compression depth, position, rate, numbers and hands-off-time will be displayed in real-time
- Airway, the angle of patient's head back will be displayed. (Hyper-extension)
- Artificial respiration, respiration volume, time, rate and numbers will be displayed in real-time

110/220V 50/60Hz

- Power Adaptor or battery

Specification

- Practice chest compression and artificial ventilation with CPR training simulator
- Practice the pre-CPR procedures such as consciousness checking pulse checking and airway opening
- Defibrillator / AED System for education

Display windows

- Trainee information: Saving and Printing the trainee information
- Training procedure setup: setting the guideline, scenario, evaluation point, training time and checklist.

Training screen:

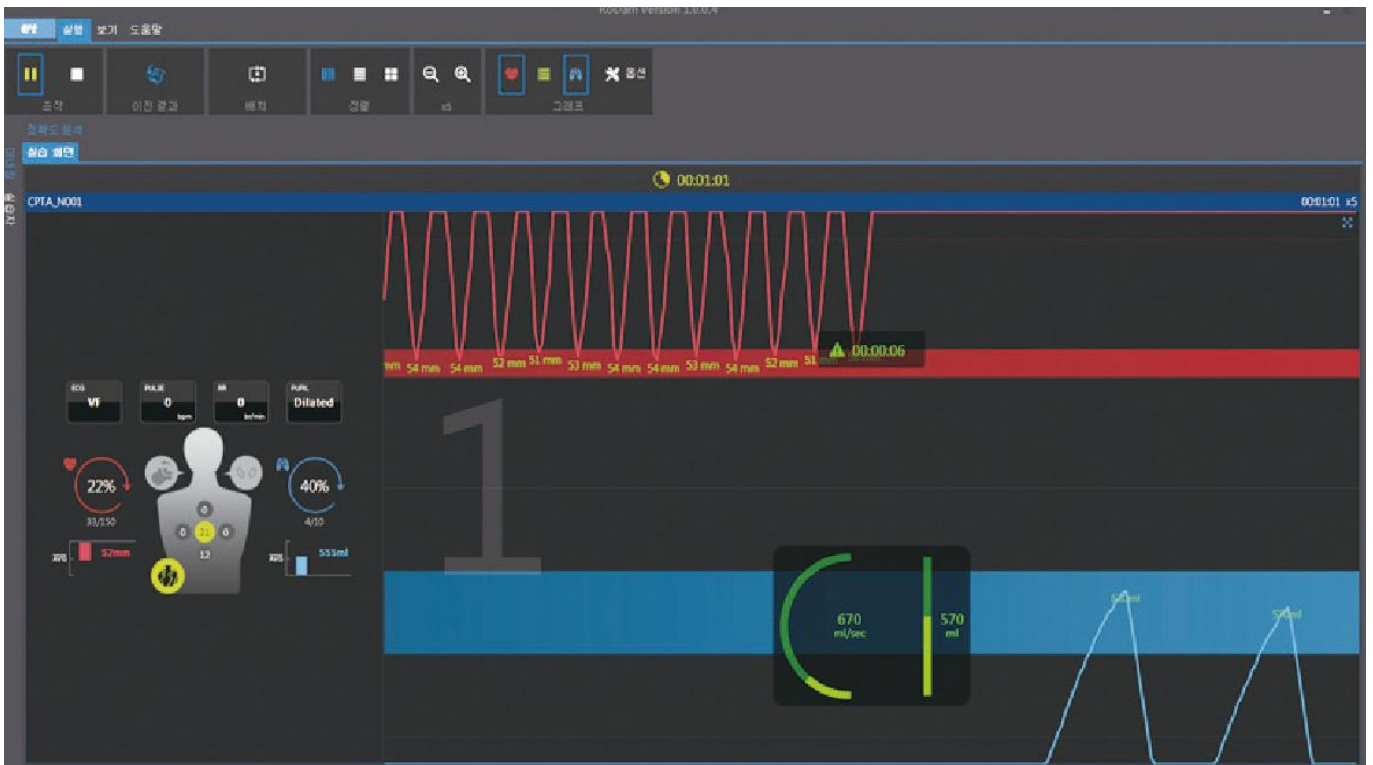
- Trainee info. / Training time / Status of manikin / Chest compression and artificial ventilation data will be displayed.
 - Check consciousness: After the trainee check the patient's consciousness, It will be marked at graph & history.
 - Check pulse: After the trainee check the patient's carotid pulse, it will be marked at graph & history.
 - Chest compression: During the chest compression, compression depth, position, rate, number and hands-off-time will be marked at graph & history.
 - Airway opening: When opening the airway, it will be marked at graph & history. (Hyper-entention)
 - Artificial respiration: During artificial respiration, respiration volume, time, rate and numbers will be marked at graph & history.
 - Defibrillation: When applying the defibrillation, shock time and number will be marked at graph & history / ECG, pulse, breathing per minute, pupil will be marked at current state.
-
- Accuracy analysis: Chest compression, artificial respiration will be displayed as a chart in real-time.
 - Practice record: All practice records from beginning to the end will be marked at graph & history.
 - Checklist: The supervisor's checking results will be displayed.
 - History: When auto item & checklist is activated, the data will be displayed at practice record.
 - Metronome: Metronome setup. (OFF, 100bpm, 110bpm, 120bpm)
 - Scenario: According to setting ECG, ECG signal, pulse, breathing per minute, pupil will be displayed in real-time.

Evaluation result:

- Trainee info, Result data display.
- Total chest compression number, average depth, rate, hands-off-time, number of normal/ incomplete/ excessive depth, number of compression position (up, down, left, right side) and number of pressure relaxation and incomplete.
- Total number of ventilation, average rate & volume, normal/ incomplete/ excessive volume of ventilation, number of stomach inflation, accurate ventilation and accuracy of artificial ventilation.
- Total score and accuracy of assessment items will be displayed.
- Item of runtime and total score will be displayed.
- It is possible to save and print the results.

Previous result

- Previous evaluation result of trainee can be uploaded.
- Result summary / Training screen/ Accuracy analysis/ History's selective display.
- User can print out the data and transfer to excel.



Note: Control PC or tablets are not included.