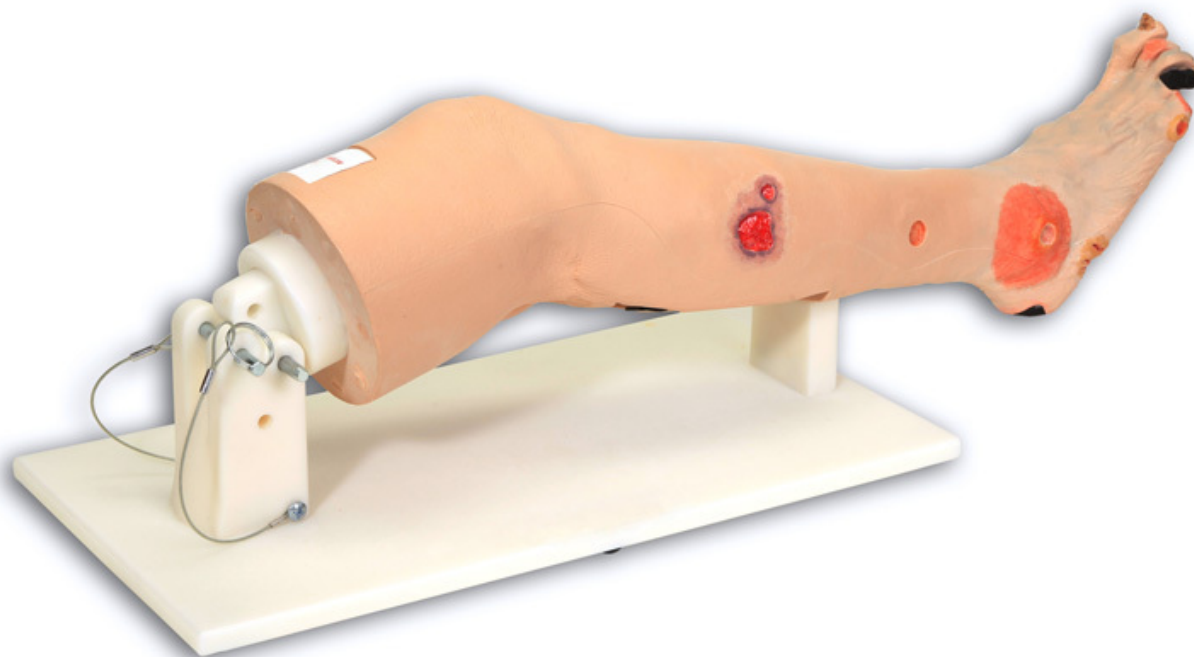


**R11021 - „Annie“ noha s žilní  
nedostatečností**  
Order code: **4003.R11021**



Cena bez DPH

1.889,00 Eur

Price with VAT

2.285,69 Eur

Parameters

Quantitative unit

ks

"Annie" Arterial Insufficiency Leg is a great tool for teaching, training, competency testing and skills assessment in the care of patients with this condition.

The following conditions are represented on "Annie" Arterial Insufficiency Leg:

- Arterial Ulcers

- Necrotic Toes
- Eschar Heel
- Charcot Foot
- Diabetic Foot Ulcer
- Cellulitis
- Dystrophic Nail
- Mottling
- Callous and Heel Fissures.

This model also includes a unique Arterial Doppler Sound module with individual buttons to activate the following doppler sounds: Monophasic, Biphasic, Triphasic and Venous. An Optional Display Stand is available which permits ,Annie' to pivot from above the knee, providing a realistic experience in supporting the leg while practicing compression wrapping, dressing changes or identifying conditions.

Delivery without stand. Stand is not included and can be ordered separately with ref.no. 4003.R11020A.