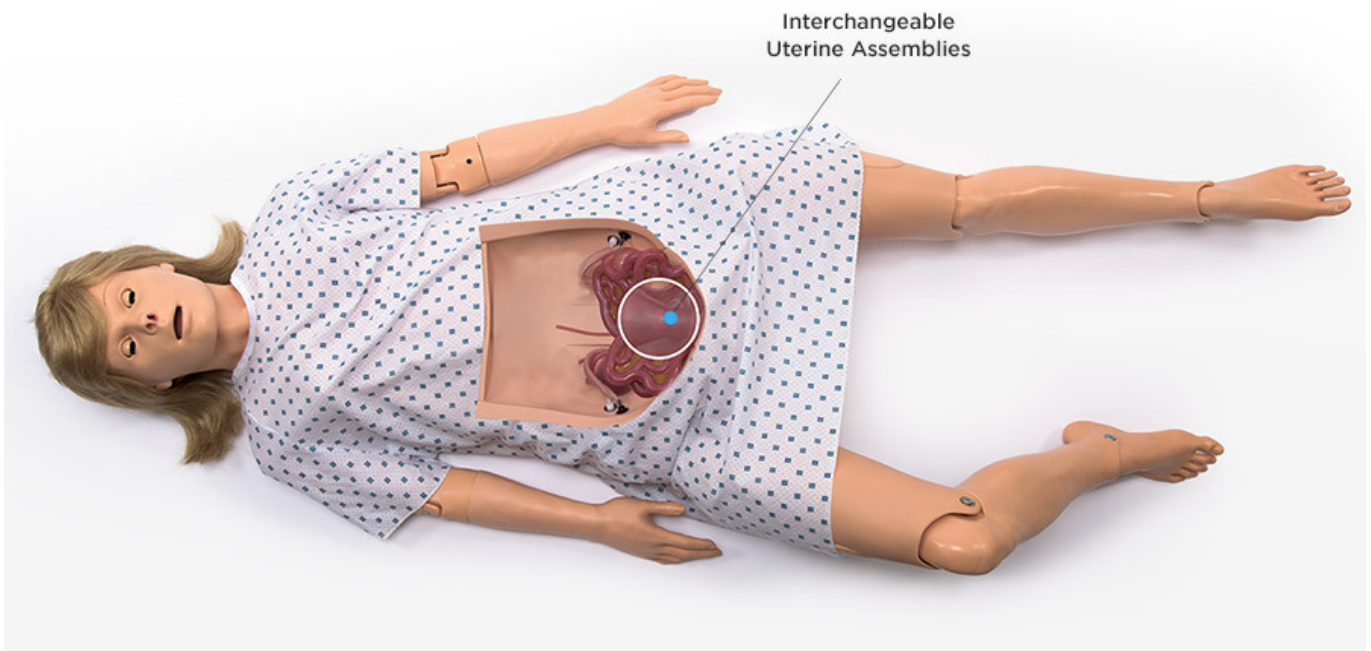




HELAGO-CZ, s.r.o.  
Commercial Register maintained by the Regional Court in  
Hradec Králové  
Section C, File 17879  
Kladská 1082  
500 03 Hradec Králové 3  
Company ID: 25 96 39 61, VAT: CZ 25963961  
Phone: 495 220 229, 495 220 394  
Fax: 495 220 154  
GSM gate: 602 123 096  
E-mail: info@helago-cz.cz  
Web: http://www.helago-cz.cz

## S2101 - Surgical Chloe™, Wireless Surgical Patient Simulator

Order code: **4108.S2101**



Information about product price on demand

### Parameters

Obstetrics, gynecology - filter

Common gynecological and obstetric actions

Quantitative unit

ks

Surgical Chloe™ S2101 is a completely wireless & tetherless, full-body patient simulator and course curriculum package designed to aid the training and assessment of the ACGME competencies in six areas including: patient care, medical knowledge, practice based knowledge and improvement, systems based practice, communication, and professionalism. Surgical Chloe™ allows the practice of GYN surgical procedures such as dermoid cyst and ectopic pregnancy removal, hysterectomy, and more using real instruments in a real surgical OR.

### General

- Full-body, adult size patient
- Available in light, medium, and dark skin tones
- Built-in wireless connectivity with tablet PC
- Up to 4 hours of tetherless power from internal, rechargeable battery
- Articulating head, jaw, shoulder, knees, and ankles

### Neural Responses

- Eyes open and Close Manually
- Wireless streaming audio & prerecorded responses
- Create and store vocal responses in any language
- Instructor can simulate patient's voice and listen to caregivers' conversation

## **Airway**

- Multiple upper airway sounds synchronized with breathing
- Perform Bag Valve Mask ventilations
- Anatomically accurate airway including tongue, epiglottis, vocal cords, and esophagus
- Placement of conventional airway adjuncts
- Nasal or oral intubation
- Endotracheal intubation using conventional ETTs
- Place Nasogastric(NG) or Orogastic(OG) tubes
- Sellick Maneuver brings vocal cords into view

## **Breathing**

- Spontaneous breathing and chest rise generated by internal compressor
- Bilateral chest rise and fall
- Programmable rate and depth of respiration
- Normal and abnormal lung sounds synchronized with respiratory pattern and rate
- Artificial ventilation rate and quality detected and logged in UNI® software

## **Cardiac**

- Monitor ECG with real equipment from 4 conductive skin regions
- Normal and abnormal heart sounds may be auscultated and are synchronized with ECG
- Multiple programmable heart sounds, rates, and intensities
- Compressions are automatically detected and logged
- Chest compressions generate palpable pulse and ECG artifacts

## **Circulation**

- Measure blood pressure by palpation or auscultation using real equipment
  - Palpate radial pulses
  - Use real cuff rather than "virtual" cuff
  - Korotkoff sounds audible between Systolic and Diastolic pressures
- Bilateral pulse sites synchronized with BP and Heart Rate
  - Carotid
  - Brachial
  - Radial
- Bilateral Intravenous(IV) arms with fill/drain sites
- Subcutaneous and intramuscular injection sites
- Realistic flashback with proper IV procedure
- Ovarian and Uterine arteries and veins with bleeding functionality
- Vital Signs reflect physiologic changes that occur with hemorrhaging during scenarios
- Oxygen Saturation detected using real monitors rather than a "virtual" value

## **Surgical Components**

### **Laparotomy Abdominal Wall**

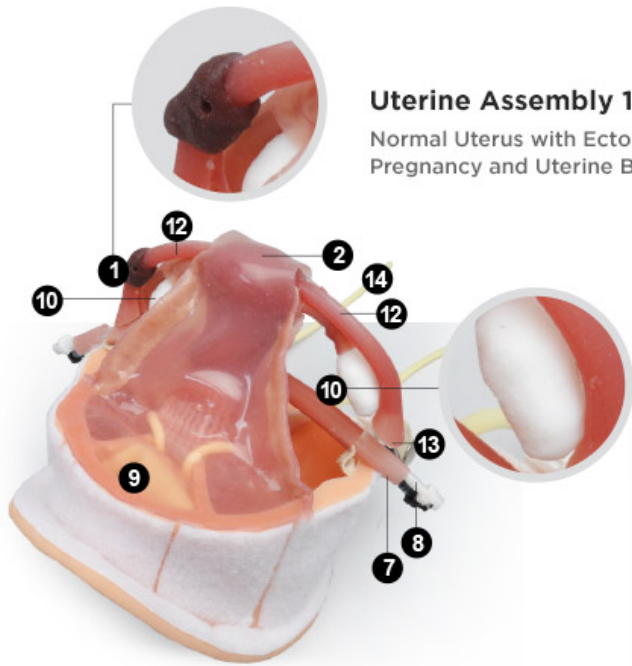
- Included Abdominal Insert
  - Multi-layer design replicates the skin, subcutaneous fat, fascia, muscle, and peritoneum
  - Use real instruments for incision, dissection, and suturing
  - Can be used at least four(4) times
  - Incorporates bleeding
  - Perform pfannenstiel or vertical incision
- Place laparoscopic trocars

### **Laparoscopy Abdominal Wall**

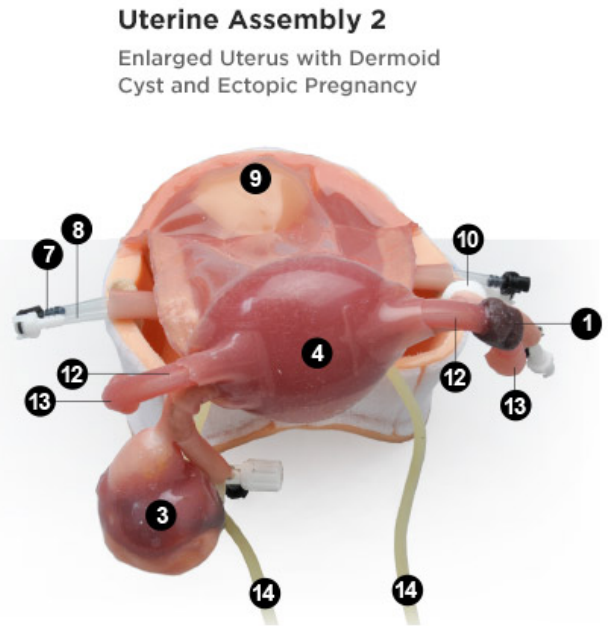
- Includes eight(8) access ports on left(3), right(3), and midline(2) of abdominal wall
- Place Laparoscopic trocars

### **Bowel Insert**

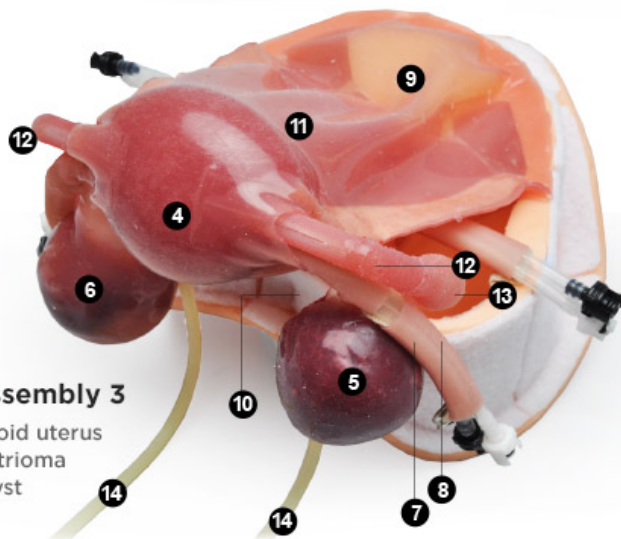
- Insert that can be placed over uterine assemblies for added realism
- Bowel can be pushed aside using standard techniques to access underlying structures



**Uterine Assembly 1**  
Normal Uterus with Ectopic Pregnancy and Uterine Bleeding



**Uterine Assembly 2**  
Enlarged Uterus with Dermoid Cyst and Ectopic Pregnancy



**Uterine Assembly 3**  
Enlarged fibroid uterus with endometrioma and simple cyst

- |                      |                       |
|----------------------|-----------------------|
| 1- Ectopic Pregnancy | 8- Arteries           |
| 2- Normal Uterus     | 9- Bladder            |
| 3- Dermoid Cyst      | 10- Ovaries           |
| 4- Enlarged Uterus   | 11- Embedded Fibroids |
| 5- Endometrioma      | 12- Fallopian Tube    |
| 6- Simple Cyst       | 13- Fimbriae          |
| 7- Veins             | 14- Ureters           |

**Uterine Assembly 1**

- Normal-sized uterus with ectopic pregnancy and uterine hemorrhage. Simulates ruptured ectopic pregnancy with bleeding and severe vaginal bleeding from uterus

**Uterine Assembly 2**

- Enlarged uterus with dermoid cyst and ectopic pregnancy. Simulates ruptured ectopic pregnancy with bleeding and realistic dermoid cyst

**Uterine Assembly 3**

- Enlarged uterus with embedded fibroids. Simulates Embedded, bleeding fibroids, a simple cyst, and endometrioma
- Additional procedures that are possible on all uterine assemblies include: unilateral oophorectomy, conization of the cervix, chromopertubation, hysteroscopy. Existence of blood vessels allows assessment of surgical knot integrity.
- All uterine assemblies include ovarian and uterine veins and arteries, bladder, ovaries, fallopian tubes, peritoneum, ureters, perineum with integrated vagina, and round, uterosacral, infundibulopelvic, and cardinal ligaments.

**Workbook by Martin E. Olsen, MD**

- Workbook of ten(10) advanced scenarios and example surgical checklists:
  - Ruptured ectopic pregnancy
  - Pelvic Mass is Pregnancy
  - Septic Abortion
  - Bleeding Disorder - Von Willebrand's Disease
  - Post-operative hemorrhage after conization of the cervix
  - Fire in the Operating Room

- Hypoxia in the Operating Room
- Cardiac Arrest in the Operating Room
- Anaphylaxis in the Operating Room
- Malignant Hyperthermia during surgery

#### UNI® Simulator Control Software

- Automatically detects and logs actions of participants
- View the actions of up to 6 care providers using a responsive menu or written narrative
- Generate and share lab results
- 11 pre-programmed scenarios which can be modified by the instructor even during the simulation
- Create and edit your own scenarios
- Change the vitals of the simulator on-the-fly with as little as two clicks

#### Virtual Monitor

- 20" All-in-one touch screen PC to display vitals
- Controlled via wireless, tablet PC
- Use selected configurations or create your own configuration to mimic the real monitors used in your facility
- Share images such as ultrasounds, CT scans, lab results, and patient charts
- Display up to 10 numeric parameters
- Display up to 6 dynamic waveforms

#### Package Contents

- Surgical Chloe™ Surgical Patient Simulator
- Control Tablet PC preloaded with UNI® (Microsoft Surface™ Pro 4)
- UNI® License including 11 scenarios
- 20" Touchscreen All-in-one Monitor preloaded with Virtual Monitor Software
- RF Communications Module
- Battery charger/Power Supply
  
- Four(4) abdominal wall inserts
- Twelve (12) uterine assemblies, four (4) of each type
- Workbook by Martin E. Olsen, MD.
- Soft-sided case with rollers
- User Manual