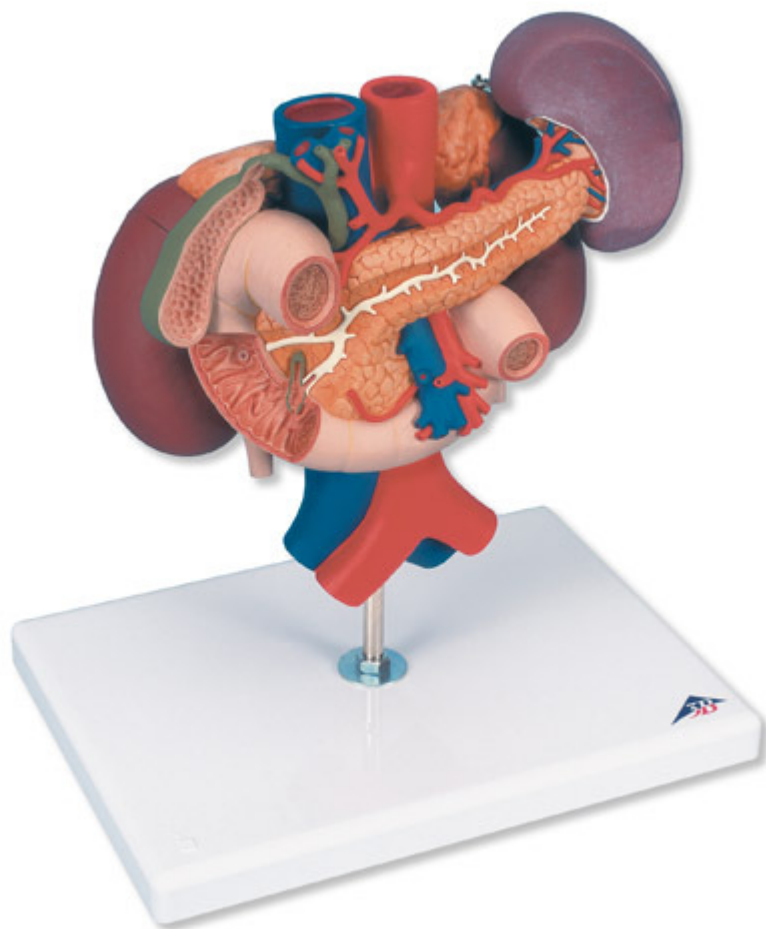


**K22/3 - Kidneys with Rear Organs of
the Upper Abdomen - 3 Part**
Order code: **4004.1000310**



Cena bez DPH

273,00 Eur

Price with VAT

330,33 Eur

Parameters

Quantitative unit

ks

This high quality Kidney model with rear organs of the upper abdomen model combines kidney models K22/1 and K22/2 depicting the anatomy of the human urinary system and digestive system. The upper abdominal organs are attached in their natural anatomical positions and are removable from the kidneys.

Front half of Kidney is removable to reveal:

- Renal pelvis
- Renal calices
- Renal cortex

- Renal medulla

The upper abdomen shows:

- Duodenum (partially opened)
- Gall bladder (opened)
- Bile ducts (opened)
- Pancreas (revealing large ducts)
- Spleen and the surrounding vessels in natural size

On stand.

Measurements: 24 × 18 × 29 cm

Weight: 1 kg