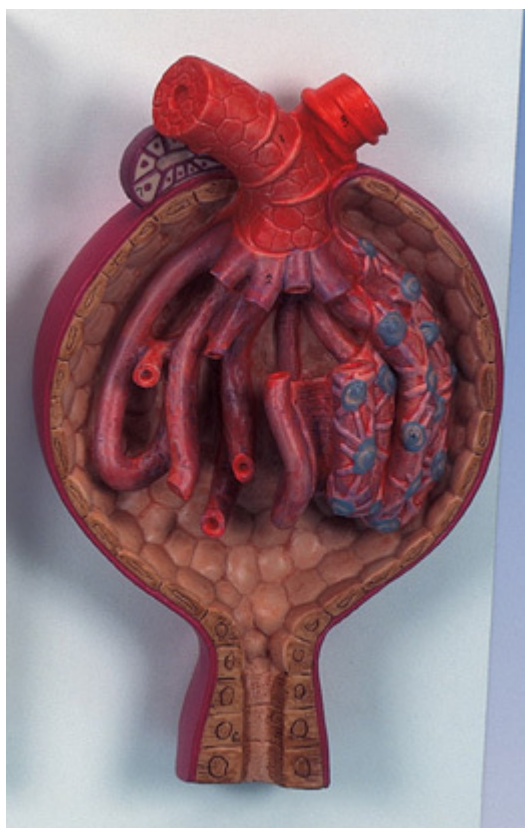


**K10/2 - Malpighian Corpuscle of  
Kidney, 700 times full-size**  
Order code: **4004.1000298**



Cena bez DPH

133,20 Eur

Price with VAT

161,17 Eur

Parameters

Quantitative unit

ks

The Malpighian Corpuscle kidney model shows an open Malpighian corpuscle with glomerulus and Bowman's capsule. The kidney malpighian corpuscle model is 700 times full-size and is mounted on a baseboard.

*Measurements: 26 × 19 × 8 cm*

*Weight: 700 g*