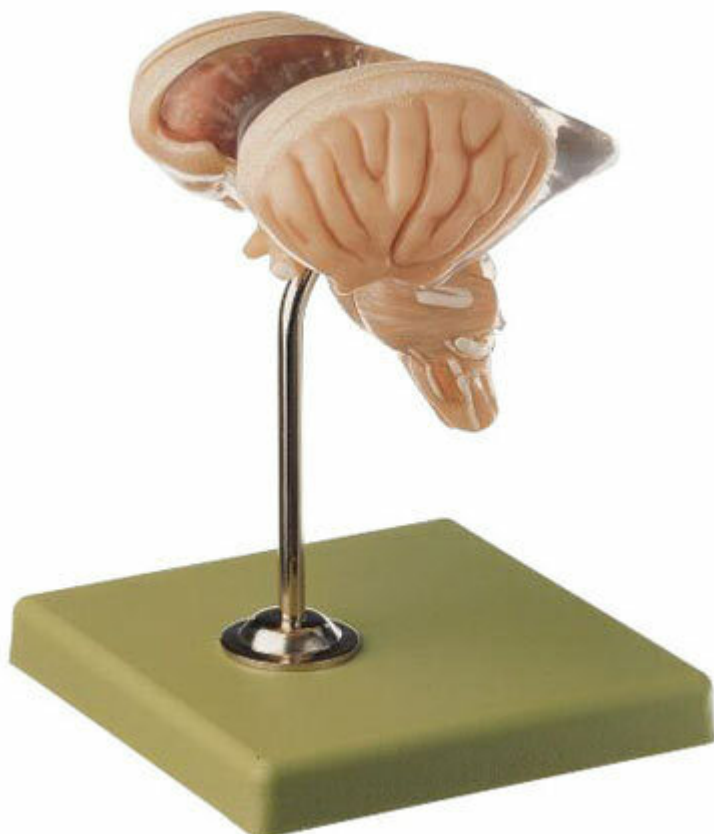


**BS 25/2 - Model of brain stem in 8
parts**

Order code: **4006.BS25/2**



Information about product price on demand

Parameters

Head, nervous system - filter

Quantitative unit

Nervový systém

ks

Natural size, made in SOMSO-Plast[®]. After Prof. Dr. Dr. J. W. Rohen, Department of Anatomy of the University Erlangen. The model separates into 8 parts as follows: brain stem (2), corpus striatum, insula (2), nucleus lentiformis (left), internatl capsule (right) and ventricles of the brain. On a stand with green base.

Height 16 cm., width: 12 cm., depth: 12 cm., weight: 380 g