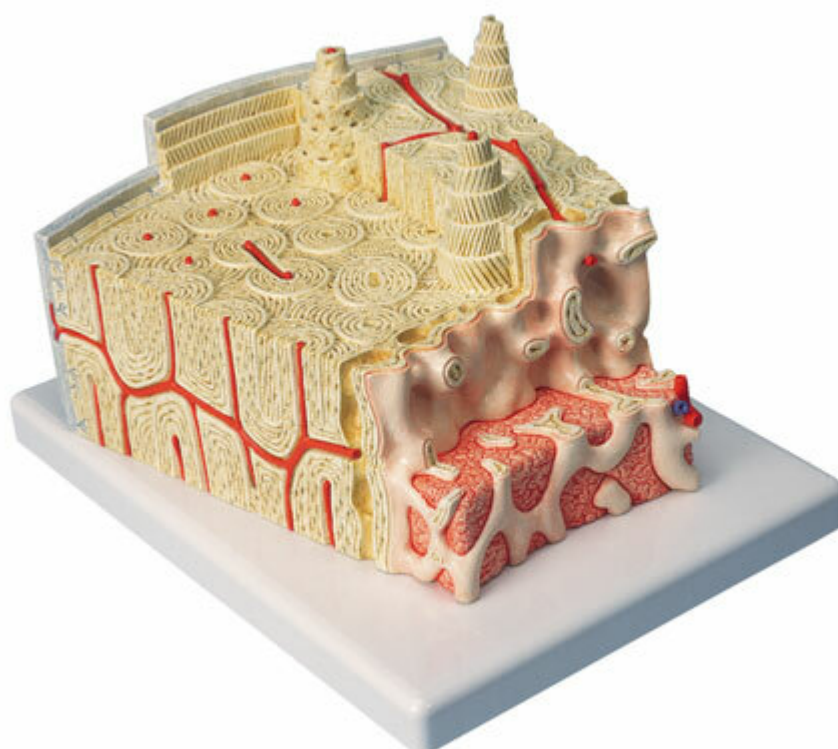


A79 - Bone structure
Order code: **4004.1000154**



Cena bez DPH

137,80 Eur

Price with VAT

166,74 Eur

Parameters

Quantitative unit

ks

This extremely detailed model depicts a three-dimensional section of a lamellar bone, showing a typical structure of a tubular bone enlarged 80 times. Various planes are shown in cross and longitudinal section through all levels of the bone, as well as a 2-plane section through the inner structure of the bone marrow. The typical elements of a lamellar bone are easily identified and help to understand its structure and function with the characteristic osteons, also referred to as Haversian systems. This model allows a graphic illustration of the interplay of the individual components, such as spongy and compact substance, endosteum, cortical substance, osteocytes, Volkmann and Haversian canals. Supplied on base.

Size: 26 × 19 × 14.5 cm

Weight: 834 g