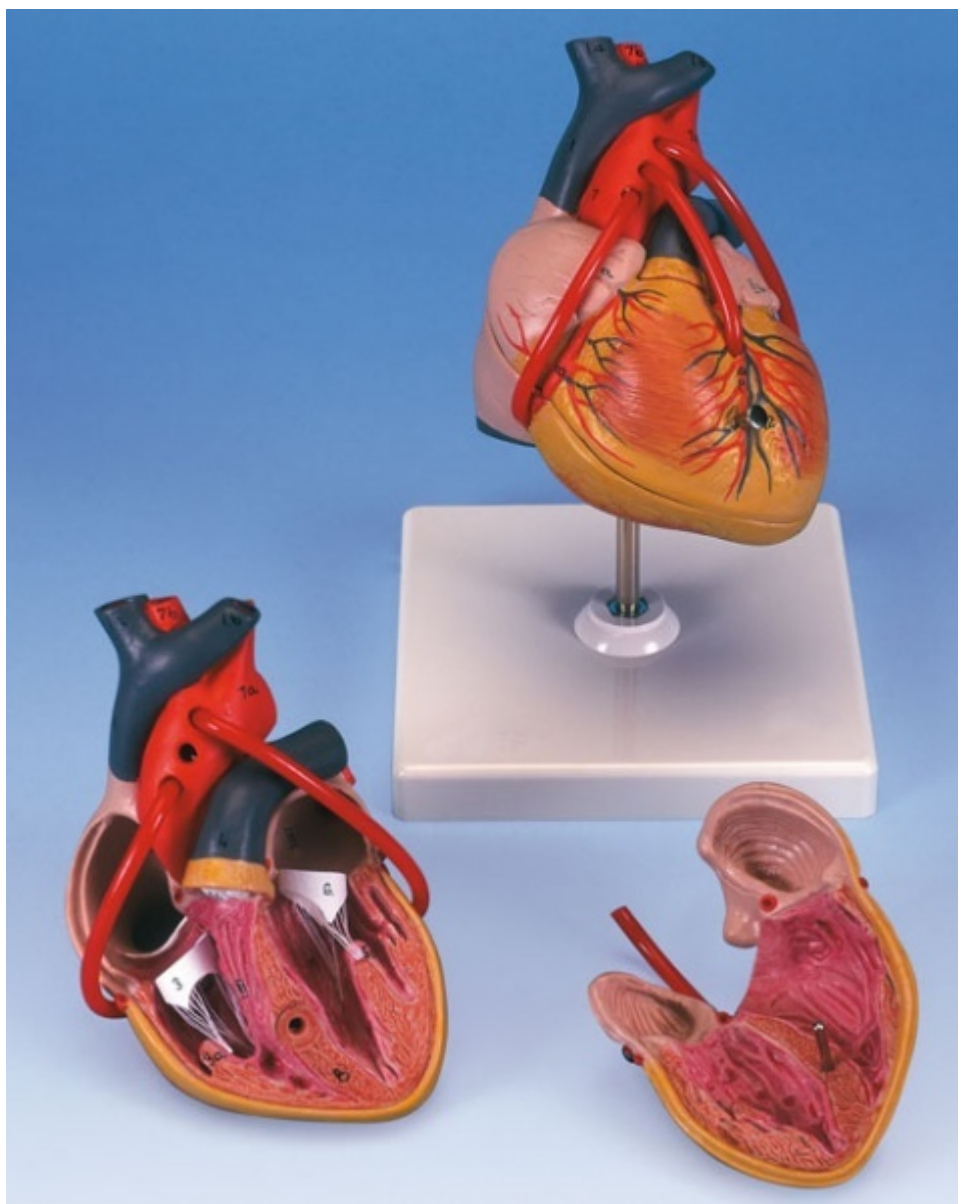


G05 - Heart with Bypass
Order code: **4004.1000262**



Cena bez DPH

106,00 Eur

Price with VAT

128,26 Eur

Parameters

Quantitative unit

ks

The anatomy of the human heart is shown in great detail with ventricles, atriums, valves, veins and the aorta. The front heart wall can be removed to reveal the chambers and valves inside. This model depicts a venal bypass to the right coronary artery, to the rasmus interventricularis anterior and to the rasmus circumflexus of the left coronary artery. Comes with a removable base.

Size: 19 x 12 x 12 cm
Weight: 400 g