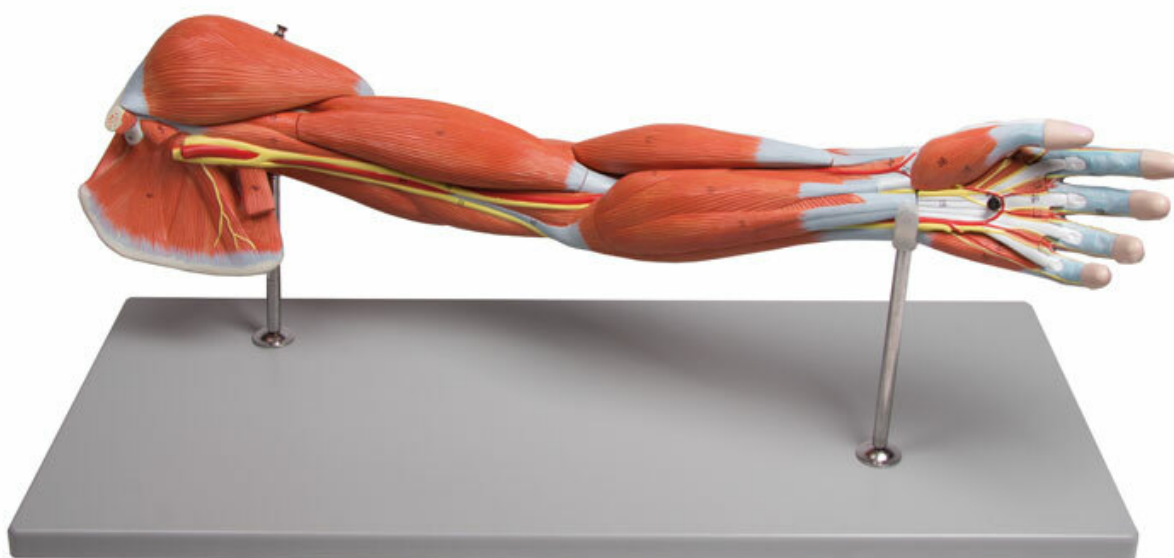


**M211 - Muscles of the Human  
Arm, 7 parts**  
Order code: **4003.M211**



Cena bez DPH	369,00 Eur
Price with VAT	446,49 Eur

Parameters

Quantitative unit	ks
-------------------	----

This life size model shows the musculature of the human arm in detail. It shows superficial and deep muscle structures, vessels, nerves and ligaments. The model shows hand, lower and upper arm as well as shoulder girdle.

**Single muscles can be removed for closer study:**

- Palmar aponeurosis
- Brachioradial muscle with radial extensor muscle
- Long palmar muscle with radial flexor muscle
- Triceps muscle
- Biceps muscle
- Deltoid muscle

Supplied with stand and manual.

Size: 72 x 18 x 10 cm, weight: 3.8 kg